

BACHELOR OF MUSIC PROCEDURES FOR SELECTION OF STUDENTS

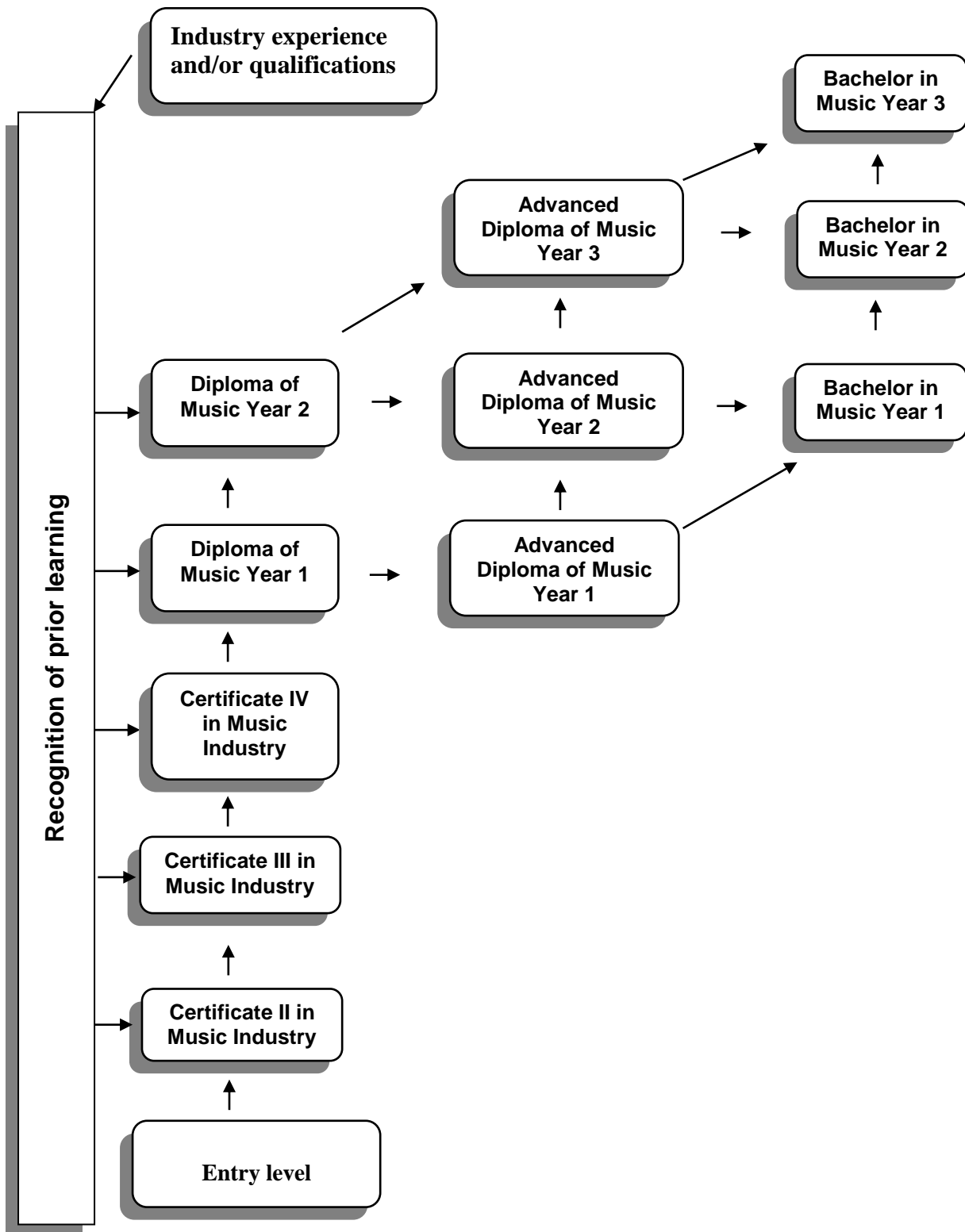
The following document contains details to help students prepare for Audition/Interviews. It also will display details of the progression levels of each course into the next. The admission tests are for the purpose of the Guild to assist students in selecting the right course that will be best suited to their needs.

If the Guild considers that a student demonstrates the abilities to be admitted to a more advanced; or lower graded course the interview/audition will include discussion in relation to previous experience such as work in the industry, previous public examination levels, and or the aptitude needed to complete the workload involved in the course which is displayed in the tests performed it will notify the student on the day of audition/interview (performance related). If the student displays high levels in performance yet a low knowledge of other theory and aural areas they will be required to complete some set tasks. See Special admission tests for more details.

Contents	Page #
Pathways to Music Industry Qualifications Flowchart of course progression	2
Fairness Procedures	3
Procedures for Selection of students	
Bachelor of Music	4
Audition/Interview Requirements	4
Special Admission Tests	5

Pathways to music industry qualifications

For a Certificate II / III / IV / Diploma / Advanced Diploma / Bachelor of Music



FAIR TREATMENT AND EQUAL BENEFITS AND OPPORTUNITIES PROCEDURES

Fairness

The Australian Guild of Music Education Inc. (AGME) will treat fairly all students who enroll or seek to enrol in a course delivered by this provider.

Equal benefits and opportunities

The Australian Guild of Music Education provides equal benefits and opportunities to all.

Decisions about students undertaking and persons applying for courses are based on merit. The following procedures which are open, fair and transparent are as followed...

Mature aged students are also enrolled upon auditions and are more than welcome to apply, the AGME does not discriminate or victimize students based on age or culture.

Students are encouraged to attend the Guild Rooms for hands on work with the equipment yet this is not compulsory to students interstate.

Applicants who have completed Music studies in other institutions, public or private, may apply, at the time of enrolment, for credit towards the course they are enrolling in. See [RPL Policy & application](#) process.

Applicants, who wish to be granted credit for work and industry experience, must make application at the time of enrolment. Such applicants will be required to undertake an audition, assessed by the Dean or academic nominee. The maximum credit granted towards the degree in this manner will be 2 years of the content of the course. Charges may apply for evaluation process.

FAIRNESS PROCEDURES FOR SELECTION OF STUDENTS

Bachelor of Music

Equal benefits and opportunities.

Each application is considered on a case by case basis. Educational disadvantage may be taken into account. An income test will **not** be applied when making decisions about which students are eligible for FEE-HELP assistance.

Entitlement to FEE-HELP assistance is restricted to those students who are enrolled in units of study on a full fee-paying basis. A full fee-paying student is a student enrolled in a HEP course of study for which the provider does not receive any funding from a State, Territory or the Commonwealth in relation to the student's enrolment in that course.

Entry Requirements

An entry is by audition/interview requiring the prospective student to present an equivalent level entry performance. A theory test paper approximately at grade 5 theory standard would need to be worked. See below for further information regarding the audition/interview.

The standard of performance at the audition/interview with the below mentioned should be commensurate with the entry level requirements of at least Grade 7 practical with Grade 5 Theory of Music, *Australian Guild of Music Education (AGME)*, or *approved examination board is required*.

AUDITION/INTERVIEW REQUIREMENTS

Performance

All instruments are catered for by the Australian Guild of Music Education.

Any material such as prior programs of live performances, resume' and the below requirements of three pieces that the student feels confident performing plus any technical work to display knowledge and level assessment to be made at

the audition. Distance students are required to complete a phone interview plus submit a video/DVD of the below requirements.

- **Vocal** - 3 pieces & requested technical element if known, Scales (doh, ray, me – doh), Arpeggios in (doh, me – doh) & exercises, view syllabus for further information
- **Guitar** - 3 pieces & requested technical element if known, Scales, Arpeggios & Exercises, view syllabus for further information
- **Piano/Keyboard** - 3 pieces & requested technical elements if known, Scales, Arpeggios & Exercises, view syllabus for further information
- **Violin/Cello** - 3 pieces & requested technical elements if known, Scales, Arpeggios & Exercises, view syllabus for further information
- **Clarinet/Flute** - 3 pieces & requested technical elements if known, Scales, Arpeggios & Exercises, view syllabus for further information
- **Percussion** - 3 pieces & requested technical elements if known, 3/4, 4/4, 6/8, time plus a good understanding of their instrument.

Pieces are to show the students full potential, such as diversity, phrasing, range (vocal only), techniques such as hammers, harmonics, bends etc for guitar, and legato, trills, soft/loud/fast/slow timing etc for all instruments. If your instrument isn't listed above the same material is required in the audition. 3 pieces plus technical elements.

The following instrumental syllabi are available to assist with the level of pieces that should be commensurate for the audition. Select one of the links below to the online syllabi for your instrument, go to grade 7 and view pieces listed. If your instrument is not mentioned in the list below select 3 pieces that you find technically difficult out of your repertoire.

[Clarinet](#); [Modern Guitar](#); [Electric Guitar](#); [Classical Guitar](#); [Traditional Piano Classical](#); [Contemporary Piano Stream B](#); [Light Classical Piano](#); [Pianoforte Stream C](#); [Violin](#); [Viola](#)

The Guild have equipment for auditions such as a stereo for backing CD's, piano's, synthesizers, drum kits, music stands, microphones, and amplifiers are available for prospective students to utilize during auditions.

Theory & Aural

A test commensurate to the entry level of the course the student is applying for enrolment in will be given to the student to be completed. Following assessment the student will be guided as to what they will need to study if there is a weakness in any particular area. (See the following details in special admissions test for further information)

SPECIAL ADMISSIONS TEST

Total fee of \$100 is broken up into the following steps 1 – 2 for admission into all courses.

Students can apply for special consideration towards exemption of fee for financial difficulties, evidence required.

Step 1 – Audition/Interview Performance - \$50

Students will have to perform 3 pieces, technical work and submit any supporting evidence of performance abilities.

During the audition/interview there will be an examiner present to assess the abilities of the student. The student will be notified of acceptance to the course on the day of audition/interview.

If required extra tutorials may need to be attended by the prospective student. Further details towards bridging any gaps will be notified to students on the day of audition/interview.

The student will be notified during the interview of all course requirements such as the following steps to process their admission.

Recognition of Prior learning will be discussed and assessed either during or after interview. A fee will apply for RPL assessment if it cannot be assessed by the person interviewing and assessing the student's entry requirements.

The Guild also supplies the student at this time details to the student handbook, [enrolment form](#), FEE-HELP application request form and the next steps theory paper.

Step 2 – Theory & Aural Assessment - \$50

Students will have to perform a set theory & aural test to provide the Guild evidence of knowledge.

Upon completion of the set tests the theory lecturer will assess the completed papers. The Dean will be notified of students' knowledge and if there are any weaknesses noted. If the student has any weaknesses they will be made aware that there will be additional tutorials and given access to a set of theory tests and exercises plus text to assist them with the workings. It is preferred that this is all completed prior to course start yet can be introduced through the first term of study where the student will receive additional tutorials from the lecturer.

(A fee may apply if extra tuition is needed)

DISTANCE students follow the same procedures with some modifications.

On application a music related CV is required. The student will then be notified to proceed with the normal entry procedure with modification in performance is presented either by SKYPE/YouTube/DVD or a USB recording and a theory paper completed at an appropriate standard is emailed to the student. The student is interviewed by phone for further information.

NOTE

Students gain access to the e-Learning site upon course commencement.

Dr Ern Knoop (Faculty Dean) Mobile 0412 327 665 or email knoop@hotmail.net.au